

# Capital Market Update

## 4th Quarter 2018



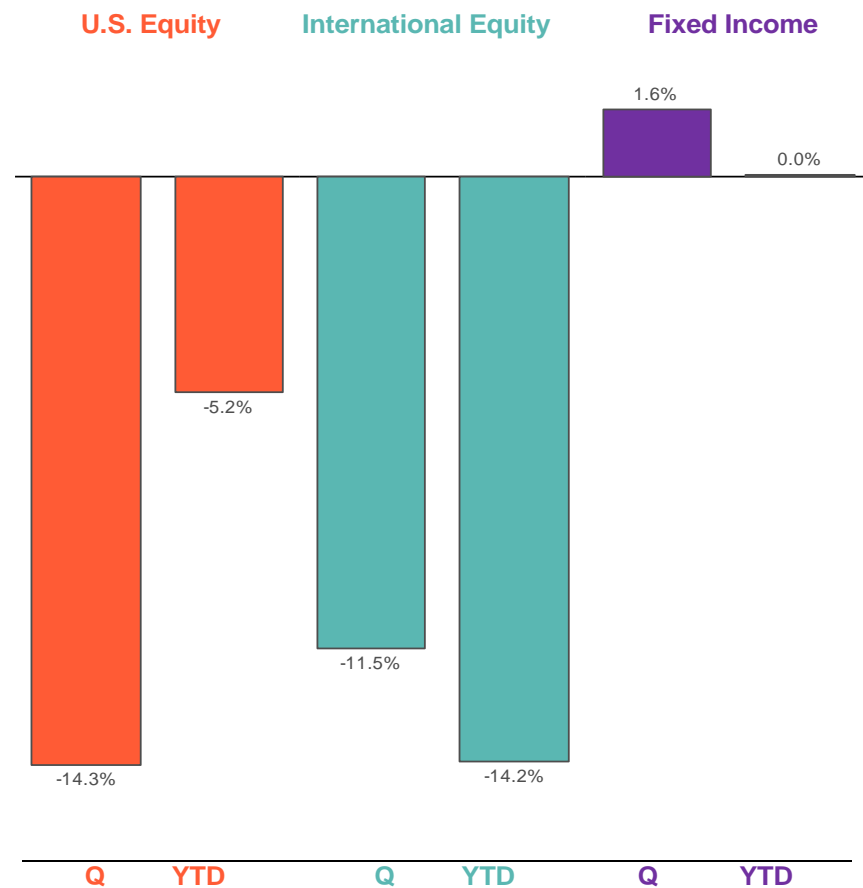
RETIREMENT PLAN  
ADVISORY GROUP

# Market Review

## SUMMARY

- U.S. equity markets declined 14.3% in the fourth quarter (Russell 3000) on a Fed rate hike, trade tensions and fear of an economic slowdown.
- After trailing domestic equities most of the year, international equities decreased at a slower pace, posting an 11.5% loss over the quarter (MSCI ACWI ex U.S.).
- The U.S. fixed income market was up 1.6% for the quarter (Bloomberg Barclays Aggregate) as interest rates declined. Additionally, the yield curve continued to flatten during the quarter.
- U.S. unemployment rose to 3.9% in December due to an increased participation rate, as more workers entered the workforce.
- U.S. GDP growth remained robust in the third quarter, up 3.5%. However, this was a deceleration from the second quarter pace.
- Marking a change in recent performance, value outperformed growth this quarter with the Russell 1000 value outperforming the Russell 1000 growth by 4.2%.
- The Federal Reserve raised interest rates a quarter point in December for the fourth time in 2018.

## TRAILING RETURNS



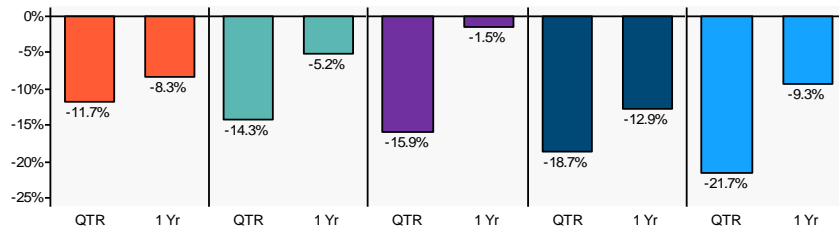
Quarterly and year-to-date returns of the following indices: U.S. Equity (Russell 3000 Index), Fixed Income (Bloomberg Barclays U.S. Aggregate Bond Index), and International Equity (MSCI ACWI ex U.S. Index)

# Market Review – U.S. Equity

## U.S. EQUITY

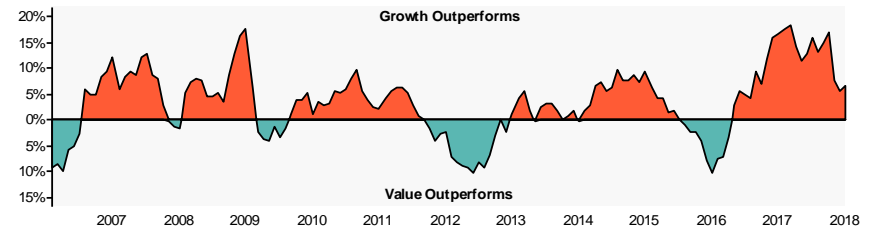
- The broad U.S. equity market, as measured by the Russell 3000 Index, was down 14.3% for the quarter.
- The best performing U.S. equity index for the quarter was Russell 1000 Value, returning a negative 11.7%.
- The worst performing U.S. equity index for the quarter was Russell 2000 Growth, returning a negative 21.7%

## INDEX PERFORMANCE (sorted by trailing quarterly performance)



	QTR	YTD	1 Yr	3 Yr	5 Yr	10 Yr
Russell 1000 Value	-11.7	-8.3	-8.3	7.0	5.9	11.2
Russell 3000	-14.3	-5.2	-5.2	9.0	7.9	13.2
Russell 1000 Growth	-15.9	-1.5	-1.5	11.1	10.4	15.3
Russell 2000 Value	-18.7	-12.9	-12.9	7.4	3.6	10.4
Russell 2000 Growth	-21.7	-9.3	-9.3	7.2	5.1	13.5

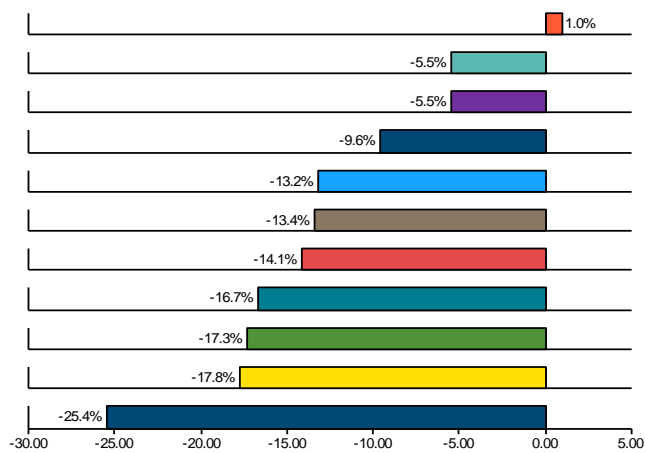
## GROWTH VS. VALUE



Over the last year, growth stocks outperformed value stocks by 6.8%.  
For the trailing quarter, value stocks outperformed growth stocks by 4.2%.

The graph above is plotted using a rolling one-year time period. Growth stock performance is represented by the Russell 1000 Growth Index. Value stock performance is represented by the Russell 1000 Value Index.

## SECTOR (sorted by trailing quarterly performance)



Source: S&P 1500 Sector Indices

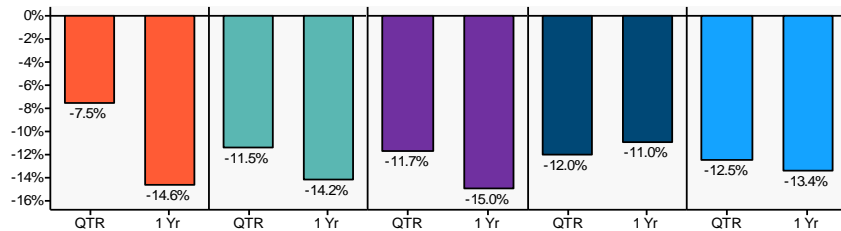
	QTR	YTD	1 Yr	3 Yr	5 Yr	10 Yr
Utilities	1.0	4.4	4.4	11.3	10.9	11.0
Consumer Staples	-5.5	-8.3	-8.3	3.1	6.3	11.2
Real Estate	-5.5	-3.4	-3.4	4.1	8.7	12.8
Health Care	-9.6	6.7	6.7	8.6	11.4	15.2
Telecommunication Svcs.	-13.2	-12.1	-12.1	2.2	2.6	7.4
Financials	-13.4	-13.0	-13.0	9.3	8.3	10.9
Materials	-14.1	-15.9	-15.9	7.9	3.8	11.5
Consumer Discretionary	-16.7	-1.0	-1.0	9.0	8.9	18.1
Information Technology	-17.3	-0.8	-0.8	16.1	14.5	18.2
Industrials	-17.8	-13.4	-13.4	8.1	5.9	12.9
Energy	-25.4	-19.3	-19.3	0.2	-6.6	3.2

# Market Review – International Equity

## INTERNATIONAL EQUITY

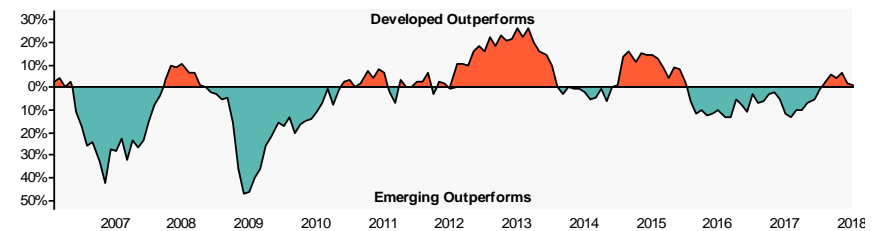
- Developed international equity returned a negative 12.5% in the last quarter (MSCI EAFE).
- Emerging market equity posted a negative 7.5% return (MSCI Emerging Markets Index).

## INDEX PERFORMANCE (sorted by trailing quarterly performance)



	QTR	YTD	1 Yr	3 Yr	5 Yr	10 Yr
MSCI Emg Markets	-7.5	-14.6	-14.6	9.2	1.6	8.0
MSCI ACWI ex US	-11.5	-14.2	-14.2	4.5	0.7	6.6
MSCI EAFE Large Value	-11.7	-15.0	-15.0	2.5	-1.2	5.0
MSCI EAFE Large Growth	-12.0	-11.0	-11.0	3.2	1.6	6.9
MSCI EAFE	-12.5	-13.4	-13.4	3.4	1.0	6.8

## DEVELOPED VS. EMERGING MARKETS

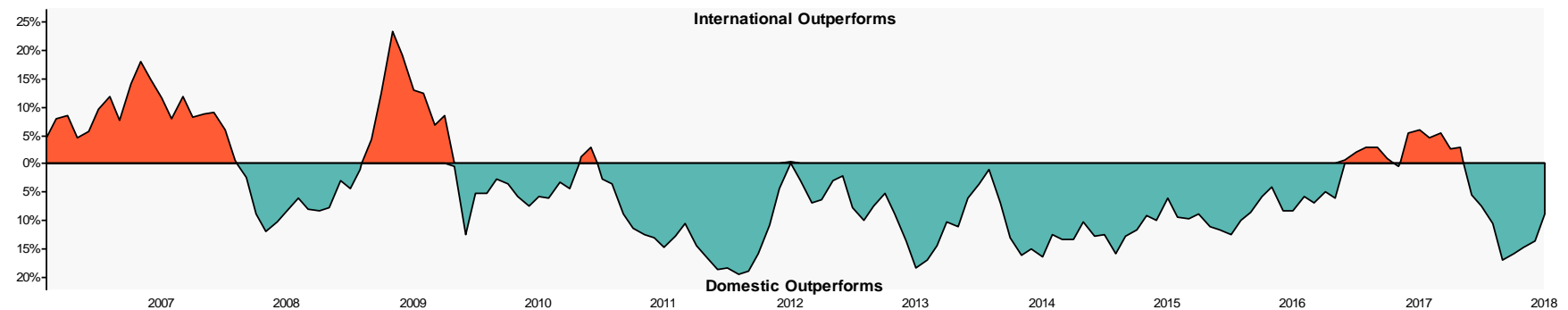


Over the last year, developed international stocks outperformed emerging market stocks by 1.2%.

For the trailing quarter, emerging market stocks outperformed developed international stocks by 5%.

The graph above is plotted using a rolling one-year time period. Developed international stock performance is represented by the MSCI EAFE Index. Emerging market stock performance is represented by the MSCI Emerging Markets Index.

## INTERNATIONAL VS. DOMESTIC



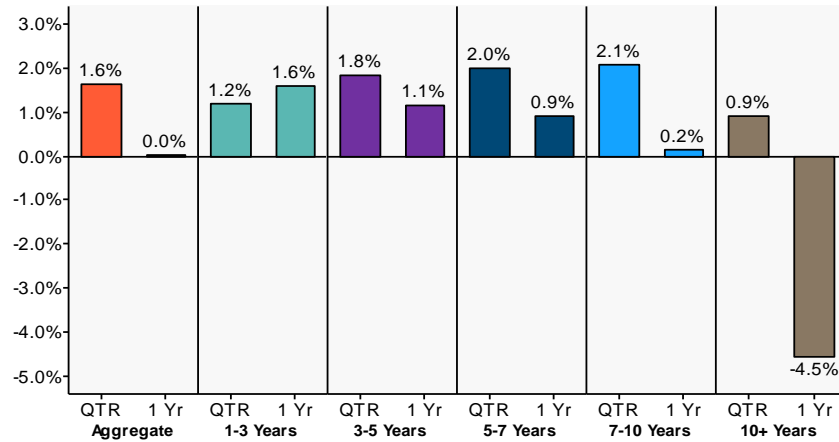
The graph above is plotted using a rolling one-year time period. International stock performance is represented by the the MSCI ACWI ex U.S. Index. Domestic stock performance is represented by the Russell 3000 Index.

# Market Review – Fixed Income

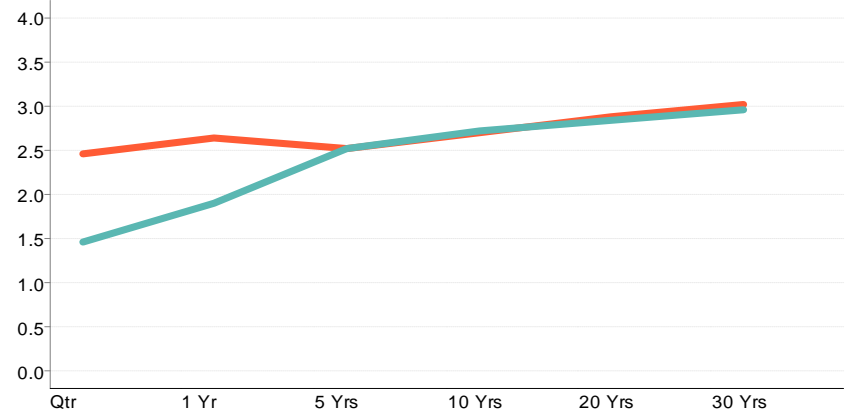
## FIXED INCOME

- The broad U.S. fixed income market returned a positive 1.6% (Bloomberg Barclays U.S. Aggregate) for the quarter.
- The best performing sector for the quarter was Government, returning a positive 2.5%. The worst performing sector for the quarter was High Yield Corporate Bond, returning a negative 4.5%.

## PERFORMANCE BY MATURITY



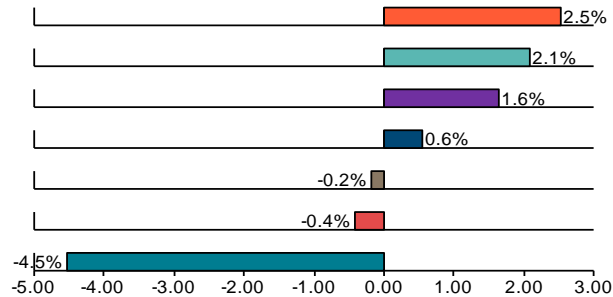
## YIELD CURVE



Source: Bloomberg Barclays U.S. Aggregate Indices

Yield Curve - Current One Year Ago

## SECTOR (sorted by trailing quarterly performance)



	QTR	YTD	1 Yr	3 Yr	5 Yr	10 Yr
Government	2.5	0.9	0.9	1.4	2.0	2.1
Mortgage Backed Securities	2.1	1.0	1.0	1.7	2.5	3.1
Aggregate Bond	1.6	0.0	0.0	2.1	2.5	3.5
Cash	0.6	1.9	1.9	1.0	0.6	0.4
Corporate Investment Grade	-0.2	-2.5	-2.5	3.3	3.3	5.9
TIPS	-0.4	-1.3	-1.3	2.1	1.7	3.6
High Yield Corporate Bond	-4.5	-2.1	-2.1	7.2	3.8	11.1

Source: Bloomberg Barclays U.S. Indices

# Market Kaleidoscope

## ASSET CLASS RETURNS

The following chart exhibits the volatility of asset class returns from year-to-year by ranking indices in order of performance, highlighting the importance of diversification.

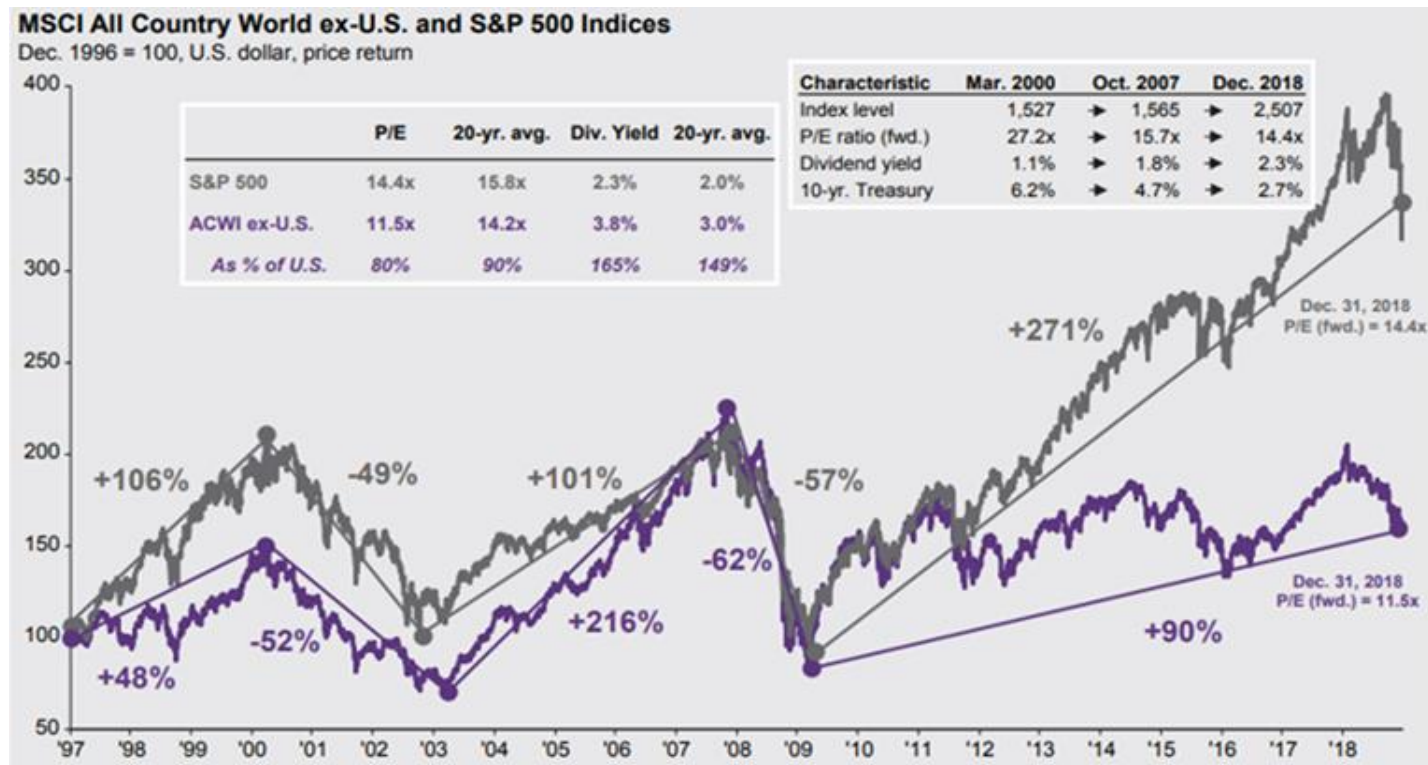
2008	2009	2010	2011	2012	2013	2014	2015	2016	2017	2018
Fixed Income 5.24	International 41.45	Sm Growth 29.09	Fixed Income 7.84	Global REIT 23.73	Sm Growth 43.30	Global REIT 22.81	Large Growth 5.67	Sm Value 31.74	Large Growth 30.21	Cash 1.87
Cash 2.06	Large Growth 37.21	Sm Value 24.50	Large Growth 2.64	Sm Value 18.05	Sm Value 34.52	Large Value 13.45	Global REIT 0.59	Large Value 17.34	International 27.19	Fixed Income 0.01
Balanced Index -22.91	Sm Growth 34.47	Global REIT 23.44	Global REIT 1.70	Large Value 17.51	Large Growth 33.48	Large Growth 13.05	Fixed Income 0.55	Commodities 11.77	Sm Growth 22.17	Large Growth -1.51
Sm Value -28.92	Global REIT 33.68	Commodities 16.83	Balanced Index 0.87	International 16.83	Large Value 32.53	Balanced Index 6.61	Cash 0.05	Sm Growth 11.32	Balanced Index 15.46	Global REIT -4.77
Commodities -35.65	Sm Value 20.58	Large Growth 16.71	Large Value 0.39	Large Growth 15.26	International 15.29	Fixed Income 5.97	Balanced Index -0.62	Balanced Index 7.28	Large Value 13.66	Balanced Index -5.12
Large Value -36.85	Large Value 19.69	Large Value 15.51	Cash 0.10	Sm Growth 14.59	Balanced Index 13.57	Sm Growth 5.60	Sm Growth -1.38	Large Growth 7.08	Global REIT 8.63	Large Value -8.27
Large Growth -38.44	Commodities 18.91	International 11.15	Sm Growth -2.91	Balanced Index 10.55	Global REIT 2.81	Sm Value 4.22	Large Value -3.83	Global REIT 6.90	Sm Value 7.84	Sm Growth -9.31
Sm Growth -38.54	Balanced Index 18.87	Balanced Index 10.74	Sm Value -5.50	Fixed Income 4.22	Cash 0.07	Cash 0.03	International -5.66	International 4.50	Fixed Income 3.54	Commodities -11.25
Global REIT -45.04	Fixed Income 5.93	Fixed Income 6.54	Commodities -13.32	Cash 0.11	Fixed Income -2.02	International -3.87	Sm Value -7.47	Fixed Income 2.65	Commodities 1.70	Sm Value -12.86
International -45.53	Cash 0.21	Cash 0.13	International -13.71	Commodities -1.06	Commodities -9.52	Commodities -17.01	Commodities -24.66	Cash 0.33	Cash 0.86	International -14.20

- Large Value (Russell 1000 Value)
- Large Growth (Russell 1000 Growth)
- Small Value (Russell 2000 Value)
- Balanced (40% Russell 3000, 40% Bloomberg Barclay's U.S. Aggregate, 20% MSCI ACWI ex US)
- Small Growth (Russell 2000 Growth)
- International (MSCI ACWI ex-US)
- Fixed Income (Bloomberg Barclays Agg)
- Global REIT (S&P Global REIT)
- Commodities (Bloomberg Commodities)
- Cash (Merrill Lynch 3-Mo T-Bill)

# Market Review – Chart of the Quarter

## Equity Valuations

After the fourth quarter correction, equity price-to-earnings (P/E) multiples are now below their 20-year average. Compared to the market peaks of 2000 and 2007, current P/E multiples are also lower and dividend yields are significantly higher. Additionally, international equities held up better than domestic equities during the quarter, which may be attributable to their relative value advantage.



Source: J.P. Morgan Asset Management, FactSet, MSCI, Standard and Poor's.

# Disclosures

Performance of indexes reflects the unmanaged result for the market segment the selected stocks represent. Indexes are unmanaged and not available for direct investment. Citigroup Corporate Bond is an index which serves as a benchmark for corporate bond performance. You cannot invest directly in an index.

Citigroup Mortgage Master is an index which serves as a benchmark for U.S. mortgage-backed securities performance.

Citigroup WGBI Index is an index which serves as a benchmark for global bond performance, including 22 different government bond markets.

Credit Suisse High Yield Index is an unmanaged, trader priced index constructed to mirror the characteristics of the high yield bond market.

BC (Barclays Capital) U.S. Aggregate Bond Index represents securities that are U. S., domestic, taxable, and dollar denominated. The index covers the U. S. investment grade fixed rate bond market, with index components for government and corporate securities, mortgage pass-through securities, and asset-backed securities. These major sectors are subdivided into more specific indices that are calculated and reported on a regular basis.

BC Credit Bond Index includes publicly issued U.S. corporate and specified foreign debentures and secured notes that meet the specified maturity, liquidity, and quality requirements. To qualify, bonds must be SEC-registered.

BC U.S. Corporate Investment Grade represents investment grade corporate securities that are U. S., domestic, taxable, and dollar denominated.

BC High Yield Corporate Bond represents below investment grade corporate securities that are U. S., domestic, taxable, and dollar denominated.

BC TIPS Index includes publicly issued U.S. government treasury inflation protected securities that meet the specified maturity, liquidity and other requirements.

BC Mortgage Backed Securities covers agency mortgage-backed pass-through securities (both fixed-rate and hybrid ARMs) issued by Ginnie Mae (GNMA), Fannie Mae (FNMA), and Freddie Mac (FHLMC).

BC Government Index includes publicly issued U.S. government securities that meet the specified maturity, liquidity and other requirements.

BarCap U.S. Aggregate 1-3 Yr. TR USD Index represents securities in the BC U.S. Aggregate Index that have maturity dates over the next 1 to 3 years.

BarCap U.S. Aggregate 3-5 Yr. TR USD Index represents securities in the BC U.S. Aggregate Index that have maturity dates over the next 3 to 5 years.

BarCap U.S. Aggregate 5-7 Yr. TR USD Index represents securities in the BC U.S. Aggregate Index that have maturity dates over the next 5-7 years.

BarCap U.S. Aggregate 7-10 Yr. TR USD Index represents securities in the BC U.S. Aggregate Index that have maturity dates over the next 7 to 10 years.

BarCap U.S. Aggregate 10+ Yr. TR USD Index represents securities in the BC U.S. Aggregate Index that have maturity dates over 10 years.

DJW 5000 (Full Cap) Index measures the performance of all U.S. common equity securities, and serves as an index of all stock trades in the United States.

MSCI FI Emerging Markets is a rules-based index which serves as a benchmark for emerging country fixed income performance.

MSCI FI EAFE International is a rules-based index which serves as a benchmark for developed international country fixed income performance.

MSCI EAFE Index is listed for foreign stock funds (EAFE refers to Europe, Australia, and Far East). Widely accepted as a benchmark for international stock performance, it is an aggregate of 21 individual country indexes.

MSCI EAFE Large Value represents the large cap value stocks within the MSCI EAFE Index.

MSCI EAFE Large Growth represents the large cap growth stocks within the MSCI EAFE Index.

MSCI EM (Emerging Markets) Index serves as a benchmark for each emerging country. The average size of these companies is (U.S.) \$400 million, as compared with \$300 billion for those companies in the World index.

MSCI World Index is a rules-based index that serves as a benchmark for the developed global equity markets.

MSCI Europe ex UK Index is a rules-based index that serves as a benchmark for the Europe's equity markets, excluding the United Kingdom.

MSCI Pacific ex Japan Index is a rules-based index that serves as a benchmark for Asia Pacific's equity markets, excluding Japan.

MSCI United Kingdom Index is a rules-based index that serves as a benchmark for the United Kingdom's equity markets.

MSCI Japan is a rules-based index that serves as a benchmark for Japan's equity markets.

Nareit All Reit Index includes all tax-qualified REITs with common shares that trade on the New York Stock Exchange, the American Stock Exchange or the NASDAQ National Market List.

3-Month T-bills (90 Day T-Bill Index) are government-backed short-term investments considered to be risk-free and as good as cash because the maturity is only three months.

Russell 1000 Growth Index is a market-capitalization weighted index of those firms in the Russell 1000 with higher price-to-book ratios and higher forecasted growth values.

Russell 1000 Value Index is a market-capitalization weighted index of those firms in the Russell 1000 with lower price-to-book ratios and lower forecasted growth values.

Russell Top 200 Growth Index is a market-capitalization weighted index of those firms in the Russell Top 200 with higher price-to-book ratios and higher forecasted growth values.

Russell Top 200 Value Index is a market-capitalization weighted index of those firms in the Russell Top 200 with lower price-to-book ratios and lower forecasted growth values.

Russell 2000 Growth Index is a market-weighted total return index that measures the performance of companies within the Russell 2000 Index having higher price-to-book ratio and higher forecasted growth values.

Russell 2000 Index consists of the smallest 2000 companies in the Russell 3000 Index, representing approximately 7% of the Russell 3000 total market capitalization.

Russell 2000 Value Index is a market-weighted total return index that measures the performance of companies within the Russell 2000 Index having lower price-to-book ratios and lower forecasted growth values.

Russell MidCap Growth Index is a market-weighted total return index that measures the performance of companies within the Russell MidCap Index having higher price-to-book ratios and higher forecasted growth values.

Russell Mid-Cap Index includes firms 201 through 1000, based on market capitalization, from the Russell 3000 Index.

Russell MidCap Value Index is a market-weighted total return index that measures the performance of companies within the Russell MidCap index having lower price-to-book ratios and lower forecasted growth values.

Russell Top 200 Index consists of the 200 largest securities in the Russell 3000 Index.

Russell 3000 Index is a market-capitalization weighted index, consisting of 3,000 U.S. common equity securities, reflective of the broad U.S. equity market.

Salomon 1-10 Yr. Governments is an index which serves as a benchmark for U.S. Government bonds with maturities ranging from 1 to 10 years.

S&P 500 Index measures the performance of the largest 500 U.S. common equity securities, and serves as an index of large cap stocks traded in the United States.

S&P 1500 Energy Index measures the performance of the energy sector in the S&P 1500 Index.

S&P 1500 Industrials measures the performance of the industrial sector in the S&P 1500 Index.

S&P 1500 Financials measures the performance of the financials sector in the S&P 1500 Index.

S&P 1500 Utilities measures the performance of the utilities sector in the S&P 1500 Index.

S&P 1500 Consumer Discretionary Index measures the performance of the consumer discretionary sector in the S&P 1500 Index.

S&P 1500 Consumer Staples Index measures the performance of the consumer staples sector in the S&P 1500 Index.

S&P 1500 Information Technology measures the performance of the information technology sector in the S&P 1500 Index.

S&P 1500 Materials measures the performance of the materials sector in the S&P1500 Index.

S&P 1500 Health Care measures the performance of the health care sector in the S&P 1500 Index.

S&P 1500 Telecommunications Services Index measures the performance of the telecommunications services sector in the S&P 1500 Index.



# Disclosures

## **General Disclosure:**

Any reproduction of this information, in whole or in part, is prohibited. The information contained herein has been prepared solely for informational purposes and is not an offer to buy or sell or a solicitation of an offer to buy or sell any security or to participate in any trading strategy. All data presented herein is unaudited, subject to revision by your advisor and is provided solely as a guide to current expectations. This document is only made available to persons of a kind to whom may lawfully be promoted.

Market indexes are included in this report only as context reflecting general market results during the period. Your advisor may provide research on funds that are not represented by such market indexes. Accordingly, no representations are made that the performance or volatility of any fund where your advisor provides research will track or reflect any particular index. Market index performance calculations are gross of management fees.

## **Research/Outlook Disclosure:**

This document and the opinions expressed are as of the date of writing and are subject to change. This proprietary research is analysis of global markets and investing. The information and/or analysis contained in this material have been compiled or arrived at from sources believed to be reliable, however your advisor does not make any representation as to their accuracy or completeness and does not accept liability for any loss arising from the use hereof. Some internally generated information may be considered theoretical in nature and is subject to inherent limitations associated therein. The reader should not assume that any investments in sectors and markets identified or described were or will be profitable. Investing entails risks, including possible loss of principal. The use of tools cannot guarantee performance. Past performance is no guarantee of future results. The information in this material may contain projections or other forward-looking statements regarding future events, targets or expectations, and is only current as of the date indicated. There is no assurance that such events or targets will be achieved, and may be significantly different than that shown here. The information in this material, including statements concerning financial market trends, is based on current market conditions, which will fluctuate and may be superseded by subsequent market events or for other reasons.

ACR# 306396 01/19